



NORTH

LEGEND

- Existing tree - canopy and exact positioning of trunk approximate only
- Proposed tree - canopy and exact positioning of trunk approximate only
- These proposed trees are dependent on existing tree positions and may be subject to change
- Refer to Indicative Landscape Planting Plan L0-020

Refer to report: Proposal for Ryman Healthcare Resource Consent Narrowneck Development_A 17 November 2015 and LS-010_A Planting Schedule & Notes

A 17/11/2015 Resource Consent Indicative Planting Plan Created

Amendments

RC 44

Suzanne Sullivan Landscaping Ltd

20 Drayton Drive, Mt Pleasant 8081
PO Box 41098 Ferrymead, Christchurch 8247

P:03 384 1152 F:03 384 1153 C:0274 358 720

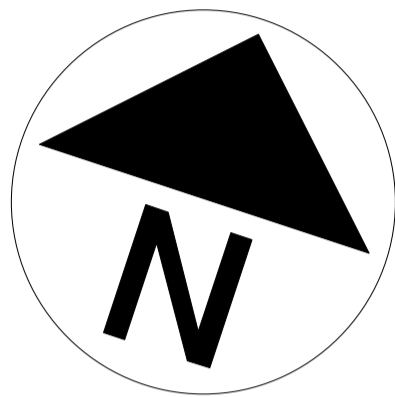
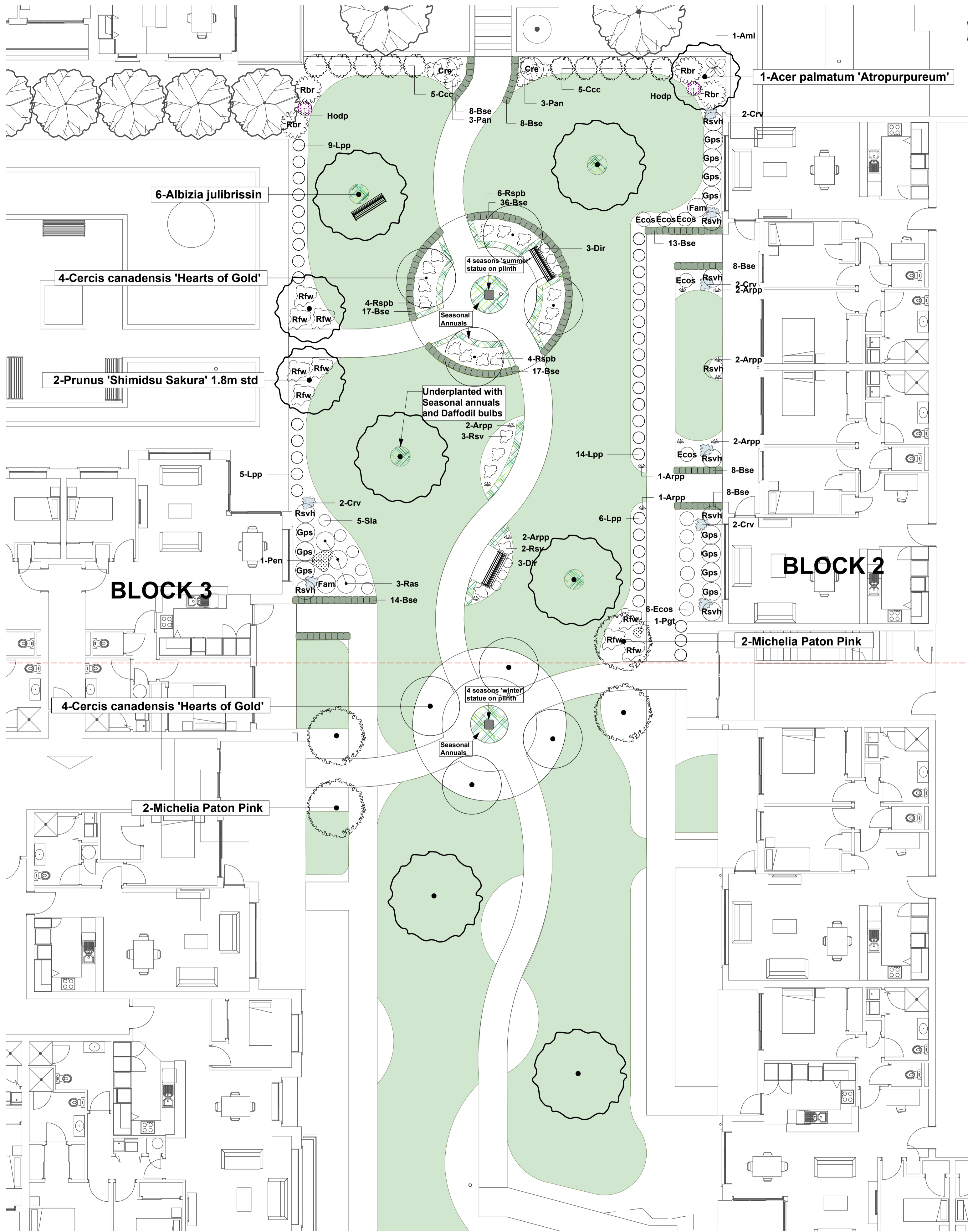
Development for Ryman Healthcare;
Narrowneck Retirement Village Proposal
Devonport, AUCKLAND

Resource Consent; Indicative Landscape Tree Planting Plan

SHEET
2 of 2

Verify all dimensions on site. Identify all boundaries and underground services before commencement of works.		
REVISED: 00/00/0000	REF:	
DRAWN: SS	DATE: 17/11/2015	SCALE: 1:250 @ A1
CAD: RV/JM	CHECKED: EV/SS	

SHEET L0-020		Amendment A
Project 035	Stage RCT	Block S01
PDF: 035-RCT_S01_L0-020_A		



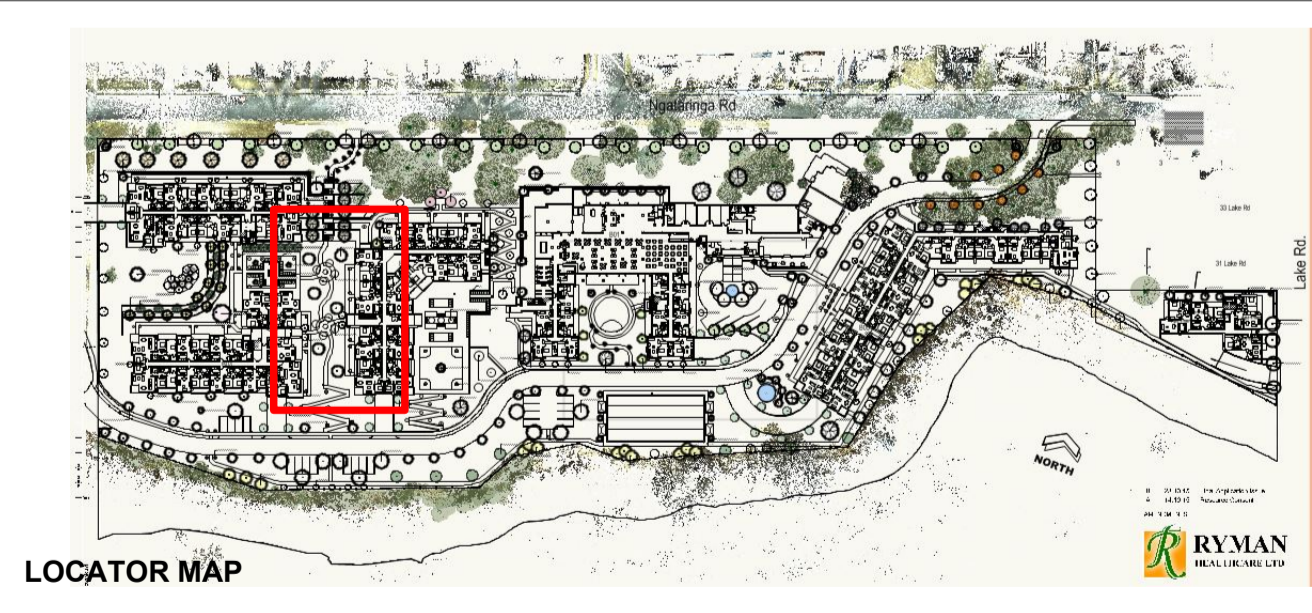
Ryman Healthcare									
Narrowneck Development - Refer to L0-010 RCT									
Indicative planting design for central gardens - Refer to L0-010 RCT									
17/11/15									
TREES									
ID	Qty	Latin Name	Common Name	Notes	Height	Spread	D/E	Scheduled size	
ACEpa	1	Acer palmatum 'Atropurpureum'	Japanese Maple	Small deciduous red leaf Japanese maple with finely-divided, lacy leaves of a deep red in the spring but foliage color fades to light green in early summer. Leaves take on a beautiful golden, orange or red color in autumn.	4.0m	3.0m	D		
ALBju	6	Albizia julibrissin	Silk Tree	Deciduous. Fluffy pink flowers Summer. Ferny open foliage. Spreading habit.	6.0m	4.0m	D	1.8m	
Colt	8	Cercis canadensis 'Hearts of Gold'	Golden Redbud	Small round golden headed tree with heart shaped leaves.	3.0m	2.5m	D	2.0m	
Myu	4	Michelia Paton Pink		Spicy, sweet scented cream flowers. Open crowned tree.	3.0m	2.5m	D	1.8m	
PRUss	2	Prunus 'Shimidsu Sakura' 1.8m std	Flowering Cherry	Pink bud, double white flowers in spring. Standard.	3.0m	3.0m	D	1.5m	
								1.8m std	
SHRUBS & PERENNIALS									
ID	Qty	Latin Name	Common Name	Notes	Height	Spread	D/E	Scheduled size	
Anl	1	Acanthus mollis	Bears Breeches	Clump forming. Large glossy, deeply lobed and toothed green leaves. Tall purple-pink bracts with crinkled white flowers in spring.	1.0m	1.0m	E		
Arpp	12	Amheria 'Pretty Petite'	Thrift	Evergreen clump forming. Foliage forms a tight tufted mound of ornamental grass like leaves. A mass of little pink flower balls on leafless stems	0.2m	0.2m	E	PB5	
Bse	146	Buxus sempervirens	Box Hedging	Small dark green leaves. Plant @5 x1m	0.4m	0.3m	E	PB3	
Coc	10	Camellia 'Cinnamon Cindy'		Compact upright growth. Miniature peony rose pink flowers opening white. Fragrant.	1.5m	1.0m	E	250mm + bushy	
Cre	2	Cycas revoluta	Sago Palm	Airy, lacy, ferny appearance with glossy deep green leaves held in rosettes on a central trunk.	1m	1m	E	PB5	
Crv	8	Campanula 'Reshold's Variety'		Groundcover. Bellflower. Panicles of blue bell shaped flowers, late spring to winter.	0.2m	0.6m	E	700mm fronds	
Dir	6	Dietes iridioides	Dry Iris	Green upright strap foliage with white and mauve iris like flowers.	0.6m	0.4m	E	PB5	
Ecos	11	Eriostemon 'Cascade of Stars'	Groundcover Wax Flower	Profusion of pink buds open to white star flowers on compact groundcover from Winter to Spring.	0.15m	0.6m	E	PB3	
Fam	2	Felicia amelioides	Kingfisher Daisy	Blue daisy flowers in Spring & Summer.	0.6m	0.8m	E	PB5	
Gps	11	Geranium (Pelargonium) 'Salmon'	Geranium Salmon	Old fashioned Geranium. Salmon	0.5m	0.8m	E	PB5	
Hodp	2	Heleborus orientalis 'Double Purple'	Winter Rose	Clump forming perennial. Double purple flowers shades in Winter.	0.6m	0.6m	E	PB5	
Lpp	37	Lavandula stoechas 'Pink Princess'	Lavender	Compact and tidy habit with grey-green foliage. Flowers are pink.	0.3m	0.3m	E	PB5	
Pan	6	Pratia angulata	Panakenake	Groundcover with White flowers deck the plant for a long period over summer and are followed by conspicuous pinky-red berries	0.2m	0.6m	E	PB5	
Pen	1	Penstemon eg 'Susan'		Pink and White tubular flowers	0.7m	1.0m	E	PB5	
Pgt	1	Penstemon 'Grape Taffey'		Deep magenta-purple flowers with white throat markings.	0.75m	0.5m	E	PB5	
Ras	3	Rose 'Ashleigh'	Bush Rose	Pink White Flowers. Low. Fragrant. Repeat flowering. Bush Rose	0.6m	0.8m	D	PB5	
Rbr	4	Rhododendron 'Bruce Brechtbill'		Pink flowers shade lighter towards the centre of the floret and they have a cream throat.	1.2m	1.2m	E	PB8	
Rfw	9	Rose Flower Carpet White		Groundcover. White flowers lightly fragrant produced for 7 to 9 months of the year.	0.6m	1.0m	Semi D	PB5	
Repb	14	Rose simplicity Pink Baby	Rose simplicity Pink Baby	Simplicity rose, low maintenance. Has pink flowers	0.6m	0.6m	D	PB5	
Rsv	5	Rose Simplicity Violet Serenity	Rose Simplicity Violet Serenity	Simplicity rose, low maintenance. Has pink/mauve flowers	0.6m	0.6m	D	PB5	
Rsvh	9	Rose Standard 'Valentines Heart'	Rose	Standard. Hybrid Tea. Medium with fragrant soft pink flowers	0.8m	0.8m	D	1m std	
Sla	5	Stachys lanata	Lambs ears	Silver woolly foliage. Pinkish flower spike.	0.5m	0.3m	E	PB3	

LEGEND

= Seasonal annuals

= Bench (illustration only)

= Planting area defined by red dotted line



Notes

1. Raised brick planters will feature at this major entry. Clumping European Fan Palm, Chamaerops humilis, with its stiff, palm fronds, will be behind the signage.
2. Evergreen Pohutukawa, Metrosideros excelsa, with its red flowers in early summer, will align this boundary.
3. Standard Cherry, Prunus Kanzan, with its stiff ascending branches will border this major carriage through village.
4. Existing Cedars, to remain where possible will create a high mature canopy to enhance the drive through on arrival.
5. N/A
6. Existing Norfolk Island Pine with its distinctive form will remain.
7. Maples, Acer Senkaki and Bloodgood, native Pseudopanax, will help mitigate the 2 storey apartment building.
8. Prunus Accolade with its spreading branches and pink flowers in spring will tie in to Ngataringa Road planting.
9. Clusters of Sophora chathamica (Kowhai) with its spring yellow flowers and fine foliage will feature along the coastal boundary. Individual Puka/Meryta sinclairii will add contrast, with its striking large leathery leaves in the landscape.
10. Acer griseum, with its distinctive peeling bark will mark the entries to individual apartments off this pathway.
11. The narrow form of the native Rewarewa will be used to mitigate the form of the building in this and other apartment buildings of this village.
12. The brilliant lilac trumpet flowers of the Princess Tree, Paulownia tomentosa, will feature by this apartment.
13. The conical upright form of the evergreen Metrosideros Maori Princess will appear along parts of the coastal boundary and will also provide interest in Summer, with its striking crimson red flowers.
14. Fagus sylvatica 'Pendula', the weeping deciduous Beech, with its pendulous branches, will feature here and elsewhere in the village.
15. Lagerstroemia 'Tuscarora' with its crepe like coral flowers and rounded canopy will frame the seating beside this large feature pond, which is a focal point for the village.
16. The evergreen Magnolia grandiflora 'Little Gem' with the distinctive dark green leaves and large creamy fragrant flowers will demark the drive down to the underground parking of the apartment buildings.
17. The distinct rounded head form of Robinia Mop top will highlight the entry paths to the apartment building, while the standard Michelia gracipes with its small leathery foliage and its fragrant white flowers will align the pathways to individual apartments.
18. Deciduous Magnolias such as 'Starwars' and Iolanthe will appear around the main entry and provide a striking display of cup-shaped flowers in various pink, maroon tones in spring.
19. Prunus 'Accolade' with its spreading branches will feature flowers and form to highlight the water feature, and will add to the spring display of this entry portico.
20. Maples with their fine foliage will feature by the entry, especially the weeping Crimson Queen with its brilliant red, fine cut leaves, highlighting the main reception area.
21. The fragrant yellow flowers of the evergreen Australian Frangipani (Hymenosporum flavum) will enhance each individual car park.
22. The weeping pear, Pyrus salicifolia 'Pendula' with its grey foliage and white flowers, will show off its weeping form.
23. The Claret Ash, with its narrow foliage and striking rich purple red atumn tones will highlight the car parking areas along this roadway.
24. The delicate ferny foliage of the Jacaranda tree with its clustered mauve flowers will be a feature specimen here.
25. The standard Liquidambar Gumball will highlight the journey along the path from the amphitheatre lawn.
26. Koelreuteria paniculata, the Golden rain tree with its pinnate foliage and yellow flowers will soften the building in this garden.
27. The distinctive weeping Mulberry, Morus alba 'Pendula', will add interest from the dining area and patio.
28. The upright form of the Fraxinus 'Purple Spire' will help mitigate the building by this corner.
29. The graceful Gleditsia Emerald Cascade with their arching branches and brilliant green foliage will feature on this raised lawn and garden area.
30. This courtyard lawn area will feature the weeping Cercidiphyllum japonicum 'Pendula'. Each garden corner will also have the distinctive Sago Palm, Cycas revoluta, with its crown of fronds to show off a different form.
31. The raised garden and seating area will be highlighted with the interesting tortuous form and curly foliage of the Robinia 'Lace Lady'.

32. The standard Michelia gracipe with its fragrant white flowers and small dark green leaves will highlight the sloping pathways down to the road from apartment buildings.
33. The delicate foliage of the silk tree with its spreading habit and fluffy pink flowers on top of the canopy, can be admired from apartments above and enjoyed from areas below.
34. The central junctions will be highlighted with the Cercis canadensis 'Hearts of golds' with its golden heart shaped leaves. The entries to the apartment building will feature the fragrant Michelia 'Paton Pink' with its pink edged flowers.
35. The narrow column form of the Knightia excelsa, native Rewarewa, and its spidery red flowers in summer will attract nectar seeking birds and highlight this part of the coastal pathway.
36. The distinctive white flower bracts of the Dogwood tree, Cornus 'Eddies White wonder', and its upright growth will add interest along the apartment block.
37. The showy burgundy red tulip shaped buds of the Magnolia 'Burgundy Star' open to a large starry flower, providing a spectacular display mid-spring along Wesley Street.
38. The 3 terraces will feature repeats of the deciduous columnar trees. The top and bottom terrace will be highlighted with green foliage of the the Gingko b. fastigata, with its distinctive maidenhair fern shaped leaves and brilliant gold autumn display. The middle terrace will feature the dark green, ribbed foliage of Carpinus b. 'Fastigiata' , with its orange yellow autumn leaves.
39. The spectacular white blossom of the great white Cherry, Prunus sato-zakura 'Taihaku' will provide spring interest to this lower level area, providing a shade canopy. Private entrances in this area are framed with Standard Rose 'Iceberg'.
40. Raised planters in this rectangular courtyard will be enhanced with weeping Maples, Standard Camellias, low hedging with 4 Obelisks to support climbers. Behind the lower wall of apartment building 4, the columnar Hornbeam will be pleached as a tall feature screen.
41. The standard Robinia 'Mop Top' with its rounded green foliage will align the entry path.
42. This lawn area will feature a grove of Crepe Myrtles of 2 varieties. The large flower panicles of white and coral will highlight spring, with their green leaves turning brilliant red, orange and yellow tones in the autumn. Once mature, shaded gardens can be established underneath.
43. The grafted weeping Elm, Ulmus g. 'Pendula' with its umbrella of weeping branches provides a focal point here, and in time, a shaded spot to enjoy the ambience of the garden (possible future hexagonal seating around tree).
44. Individual apartment entries will be framed with the standard Bay, Laurus nobilis and the Camellia hedge will mitigate the wall behind. The coral bark maple, Acer p. senkaki will provide interest in the corner with its distinctive coral stems in winter.
45. Platanus O. 'Autumn Glory' has deeply cut leaves and dappled bark which will highlight this apartment building and give great autumn colour.
46. Raised brick corner planter features the Clumping Fan Palm, Chamaerops humilis, which will be an indicator for the Wesley Road entry.
47. The fragrant evergreen Hymenosporum flavum, Australian frangipani, with its yellow flowers will be repeated along Ngataringa Road within the boundary fence.
48. The flower cherry Prunus Accolade with its ascending branches will be repeated in the set back bays on this boundary where existing trees allow.
49. The Mt. Fuji Cherry, Prunus Shirotae, with its wide spreading habit and fragrant white flowers will feature on a terrace of this walkway.
50. The standard Liquidambar Gumball with its balled head of maple like likes will align this walkway until the first terrace, whilst the fragrant standard Michelia gracipes will edge each terrace and step area.
51. Each terrace will feature the stately Pyrus calleryana 'Aristocrat' with its open form and spreading branches with red autumn tones.
52. Groups of large existing trees predominantly Cedrus and Pohutukawa will remain to give an established setting.
53. The magnificent cup shaped blooms of Magnolia 'Cleopatra' will highlight this seating area.
54. The white Crepe Myrtle, Lagerstroemia indica 'Kimono' will follow this pathway with the red maple, Acer Bloodgood, providing interest against the building. On the lowest level, a kitchen garden will be established with raised planter boxes.
55. The Dogwood, Cornus 'Eddies white wonder' will feature in this retained garden with its upright form, spring white flower bracts and autumn tones.
56. The interesting golden spring foliage of Tilia Cordata'Spring glow' with its branching habit will add seasonal interest here.
57. The upright columnar Hornbeam, Carpinus betulinus 'Fastigiata' will highlight this end of the building.

Ryman Healthcare									
Narrowneck Resource Consent									
Indicative Tree Planting schedule									
LS-010_RCT									
17/11/15									
TREES									
ID	Qty	Latin Name	Common Name	Notes	Height	Spread	D/E	Scheduled Size	
ACEcq	6	Acer 'Crimson Queen' 1.0m std	Weeping Japanese Maple	Red Weeping Maple. Red cut leaf turning scarlet in Autumn. Standard	1.0m std	1.5m	D	1.0m std	
ACEel	1	Acer p. dissectum 'Emerald Lace' 1.2m std	Weeping Japanese Maple	Deciduous. A very vigorous grower with emerald green foliage in spring and summer which turns a deep red in autumn. Standard	1.2m std	1.5m	D	1.2m std	
ACEgri	8	Acer griseum	Paper Bark Maple	Very distinctive, papery, orange brown bark. Dark green leaves with pale grey-green undersides, turning brilliant orange, red and yellow in autumn.	6.0m	4.0m	D	1.8m	
ACEpb	4	Acer palmatum 'Bloodgood'	Japanese Maple 'Bloodgood'	A large bushy deciduous small tree with deep red-purple leaves. Turns red in Autumn. Small purple flowers are followed by red fruits	4.0m	3.0m	D	1.8m	
ACEps	7	Acer palmatum 'Senkaki'	Coral Bark Japanese Maple	Coral Bark Maple. Soft lime green, red margined foliage in spring. Green mid summer turning bright gold in autumn. Brilliant red trunk in winter.	4.0m	2.5m	D	1.8m	
ALBju	6	Albizia julibrissin	Silk Tree	Deciduous. Fluffy pink flowers Summer. Ferny open foliage. Spreading habit.	6.0m	4.0m	D	2.0m	
Cbf	17	Carpinus betulinus	Upright Hornbeam	Pyramidal habit, prominent green ribbed leaves.	6.0m	3.0m	D	2.0m	
Cclt	8	Cercis canadensis 'Hearts of Gold'	Golden Redbud	Small round golden headed tree with golden heart shaped leaves. Pale rose pink flowers on branches in spring.	3.0m	2.5m	D	1.8m	
Ceww	14	Cornus 'Eddies White Wonder'	Dogwood	Rounded green leaves turning yellow to red in Autumn. White flower bracts in spring. Upright grower	5.0m	3.0m	D	1.8m	
Chu	3	Chamaerops humilis	European Fan Palm	Clumping fan palm with stiff green grey leaves. Hardy	2.0m	2.5m	E	1.5m	
Cja	1	Cercidiphyllum japonicum 'Pendula'	Weeping Katsura Tree	Long pendant branches with good autumn colours	2.0m	2.5m	D	1.5m+	
Cre	4	Cycas revoluta	Sago Palm	Airy, lacy, ferny appearance with glossy deep green leaves held in rosettes on a central trunk.	1m	1m	E	Pb12	
FAGsp	2	Fagus sylvatica 'Pendula'	Weeping Beech	Large deciduous tree forming either a broad crown with wide-spreading main boughs draped with long, pendulous side-branches, or more upright with steeply drooping branches. Leaves elliptic, green.	5.0m	4.0m	D	2.0m	
Fap	1	Fraxinus excelsior 'Aurea 'Pendula'	Golden Weeping Ash	Young growth golden yellow. Weeping form.	3.0m	2.0m	D	2.0m	
For	11	Fraxinus oxycarpa 'Raywoodi'	Claret Ash	Narrow foliage. Rich purple/red foliage Autumn.	8.0m	5.0m	D	2.5m+	
FRAXps	2	Fraxinus 'Purple Spire'	Purple Ash	This ash has an upright form with a very even branching habit. Spring/Summer leaves are a fresh green. Autumn tones of orange and purple. Bears glossy fresh pinnate leaves through spring and summer. In late summer the leaves turn purple then glowing orange. Tolerates strong winds.	8.0m	4.0m	D	1.5m	
Gbf	12	Ginkgo biloba 'Fastigiata'	Upright Maidenhair Tree	A column-shaped selection with a narrow, column-shaped crown. Adding decorative value is the golden yellow colour this tree turns in autumn.	8.0m	3.0m	D	2.0m	
Gec	3	Gleditsia triacanthos. i. 'Emerald Cascade'	Thornless Weeping Gleditsia	Arching pendant branches, emerald green leaves with turn yellow in Autumn	4.0m	3.0m	D	1.8m	
Hyf	26	Hymenosporum flavum	Australian Frangipani	Open habit with glossy green leaves and masses of yellow scented flowers.	6.0m	4.0m	E	2.0m	
Jni	3	Jacaranda mimosifolia	Jacaranda	Open form with soft ferny leaves. Mauve flowers in racemes in spring and summer.	7.0m	5.0m	D	2.0m	
Kex	22	Knightia excelsa	Rewarewa	Foliage deep green, glossy with toothed margins. Small reddish flowers in summer.	7.0m	2.0m	E	2.0m	
Kpa	7	Koelreuteria paniculata	Golden Rain Tree	Pinnate leaflets. Yellow clustered flowers in summer followed by papery capsules turning red in autumn.	6.0m	3.0m	D	1.8m	
LAGIK	18	Lagerstroemia indica 'Kimono'	Crepe Mytle	Abundant white flowers in summer with prominent gold anthers borne in panicles to 18 cm long and 12 cm wide. Bark exfoliates to reveal a light greyish-brown underbark.	3.0m	2.5m	D	1.5m	
LAGlu	8	Lagerstroemia 'Tuscarora'	Crepe Mytle Tuscarora	Abundant coral red flowers in summer. Each summer the Tuscarora Crepe Myrtle exfoliates its light brown coloured bark in thin strips to expose a smooth and light grey colored bark.	4.0m	5.0m	D	1.5m	
LIQsgs	22	Liquidambar styraciflua 'Gumball' Standard	SweetGum	Maple like leaf on a tight restricted head. Brilliant autumn tones. Corky bark on branches. Standard	3.0m	1.5m	D	1.5m std	
LIQslr	8	Liquidambar styraciflua 'Lane Roberts'	SweetGum	Upright pyramidal form. Maple like leaf. Brilliant reddish autumn tones.	12.0m	8.0m	D	2.0m+	
Lns	9	Laurus nobilis 'Standard'	Sweet Bay or Bay Laurel	Standard clipped. Leathery dark green aromatic foliage.	2.0m	1.5m	E	1.5m std clipped	
Mael	2	Morus alba 'Pendula'	Weeping White Mulberry	Spectacular small weeping tree with large glossy heart-shaped leaves and sweet edible reddish yellow fruit. Loved by birds.	2.0m	1.8m	D	1.7m	
Magbs	6	Magnolia 'Burgundy Star'		Burgundy red tulip shaped buds which open to large star shaped flowers in spring.	5.0m	3.0m	D	2m	
Mcl	3	Magnolia 'Cleopatra'	Lily Magnolia	Rich reddish purple cup shaped flowers in spring. Small upright narrow conical habit.	4.0m	3.0m	D	1.8m	
Max	7	Metrosideros excelsa	Pohutukawa or NZ Xmas Tree	Dense ovate green foliage. Crimson/red flowers inSummer.	5.0m	4.0m	E	1.8m	
Mfs	10	Michelia figo standard	Port Wine Magnolia	Dense bush with mid green along leaves. Small magnolia like flowers, ivory tinted rosy purple base. Highly fragrant.	2.5m	1.0m	D	1.8m	
Mgstd	31	Michelia gracipes 'Standard' 1.5m	Michelia Standard	A small tree with shiny dark green leaves. In spring masses of perfumed white flowers are produced from velvety brown buds. Evergreen. 1.5m Standard	1.8m	1.2m	E	1.5m std	
Mhs	2	Magnolia Iolanthe	Magnolia	Abundant deep-pink and lavender cup-shaped flowers early to mid spring. Extremely prolific. Commences blooming on two-year-old bushes. Deciduous. Hardy.	8.0m	2.0m	D	2.0m	

Mig	27	Magnolia grandiflora 'Little Gem'		Small columnar tree. Deep green leaves with brown felt beneath. Creamy white flowers late summer.	5.0m	3.0m	E	2.0m +	
Min	1	Magnolia liliflora 'Nigra'	Lily Magnolia	Palely black flower buds opening dark maroon with pink stained cream interior over spring summer.	2.0m	1.5m	D	1.5m	
Mmp	6	Metrosideros Maori Princess	Pohutukawa or NZ Xmas Tree	Conical upright form making it a great tree for streets or narrow situations. Rich, green, oval-shaped leaves, crimson red flowers and rough dark brown bark. It has a very straight trunk.	7.0m	4.0m	E	2.0m	
Msi	9	Meryta sinclairi	Puka	Thick leathery, glossy leaves. Panicles of green-white flowers followed by black berries.	6m	3m	E	1.8m	
MSW	1	Magnolia 'Star Wars'	Star Magnolia	Deep pink buds, flushed with purple, opening to rose pink, in a large star shape.	5.0m	2.0m	D	1.8m	
Myu	4	Michelia Paton Pink		Spicy, sweet scented pink tulip-shaped flowers. Open crowned tree.	3.0m	2.5m	D	1.8m	
PLAag	6	Platanus orientalis 'Autumn Glory'	Oriental Plane	Deeply cut leaves with brilliant gold and orange autumn colours. Bark peels off in plates.	6.0m	5.0m	D	2.0m+	
PRUac	19	Prunus 'Accolade' 1.8m std	Flowering Cherry	Spreading branches. Semi-double rich pink flowers with frilled margins. Standard	6.0m	5.0m	D	1.8m std	
PRUia	40	Prunus sato-zakura 'Kanzan' 1.8m std	Kanzan Cherry	Stiffly ascending branches with showy purple-pink blossoms deeper in bud. New bronze green foliage. Autumn tones of orange & red. Standard.	6.0m	3.0m	D	1.8m std	
PRUlus	8	Prunus lusitanica 'Hearts of Gold'	Portugal Cherry	Oblong dark glossy leaves with reddish stalks. Small white flowers in spring with conical fruits	1.8m	1.0m	E	1.8m	
PRUsh	1	Prunus shirotae	Mt Fuji Cherry	1.5m graft. A wide-spreading, horizontal flowering cherry tree with drooping branches. Large snow-white semi-double flowers from September-October.	5.0m	5.0m	D	1.5m	
PRUzst	1	Prunus sato-zakura 'Taihaku'	Great White Cherry	Tall spreading tree with rounded crown. Large white flowers.	8.0m	6.0m	D	1.5m	
Pac	3	Pseudopanax crassifolius	Lancewood	The juvenile form has long thin leaves that hang down. The adult form has leathery lobed leaves.	4.0m	1.0m	E	1.8m	
Psp	6	Pyrus salicifolia 'Pendula' 1.5m std	Weeping Silver Pear	Weeping stems with silvery green foliage, small greeny white flowers in spring with small pear fruits in autumn. Standard	3.0m	2.0m	D	1.5m std	
Plo	1	Paulownia tomentosa	Princess Tree	Lilac trumpet shaped blooms in erect heads, mid spring. Large handsome foliage.	8.0m	6.0m	D	2.0m	
Pya	8	Pyrus calleryana 'Aristocrat'	Upright Ornamental Pear	Hardy elegant tree, ovate foliage, clusters of white flowers in spring. Brilliant autumnal colours.	11.0m	3.0m	D	2.0m	
Rmt	18	Robinia 'Mop Top'		Standard Robinia. Fresh rounded green leaves in spring. Clip to ball top.	2.0m	1.0m	D	1.5m standard	
Rps	3	Robinia pseudoacacia 'Lace Lady' 1.2m std	Contorted Black Locust	Very interesting 'tortoise' form with twisted and turning branches & bright green leaves which curl as the season progresses. Standard	2.5m	2.0m	D	1.2m std	
Scha	21	Sophora chathamica	Coastal Kowhai	Tiny compound leaves with yellow flowers in late winter to early spring. Has no juvenile stage. Hardy	6.0m	4.0m	E	1.5m	
Tog	3	Tilia cordata 'Spring Glow'	Small-leaved Lime	A tree noted for its wonderful spring growth of arking golden-yellow foliage which fades to a fresh, lime-green shade over summer.	5m	3m	D	2.0m	
Ugp	1	Ulmus glabra 'Pendula'	Weeping Elm	Dome shaped head heavily foliaged with deep green serrated obovate leaves.	3.0m	3.0m	D	2.0m	

Refer to report: Proposal for Ryman Healthcare Resource Consent
Narrowneck Development_A 17 November 2015

Refer to Sheets 032-RCT_S01_L0-010_A and
032-RCT_S01_L0-020_A (17 Nov 2015)

A 17/11/2015 Resource Consent Indicative Landscape Tree Planting Schedule & Notes
Amendments

Development for Ryman Healthcare;
Narrowneck Retirement Village Proposal
Devonport, AUCKLAND

Resource Consent; Indicative Landscape Tree Planting Schedule and Notes

DATE: 17/11/2015
CAD: RV/JM
CHECKED: EV/SS
SHEET
LS-010
Amendment
A

Suzanne Sullivan Landscaping Ltd
20 Drayton Drive, Mt Pleasant 8081
PO Box 41098 Ferrymead, Christchurch 8247
P:03 384 1152 F:03 384 1153 C:0274 358 720



RC 45a



Edmund Hillary Retirement Village
Auckland



Jane Mander Retirement Village
Whangarei



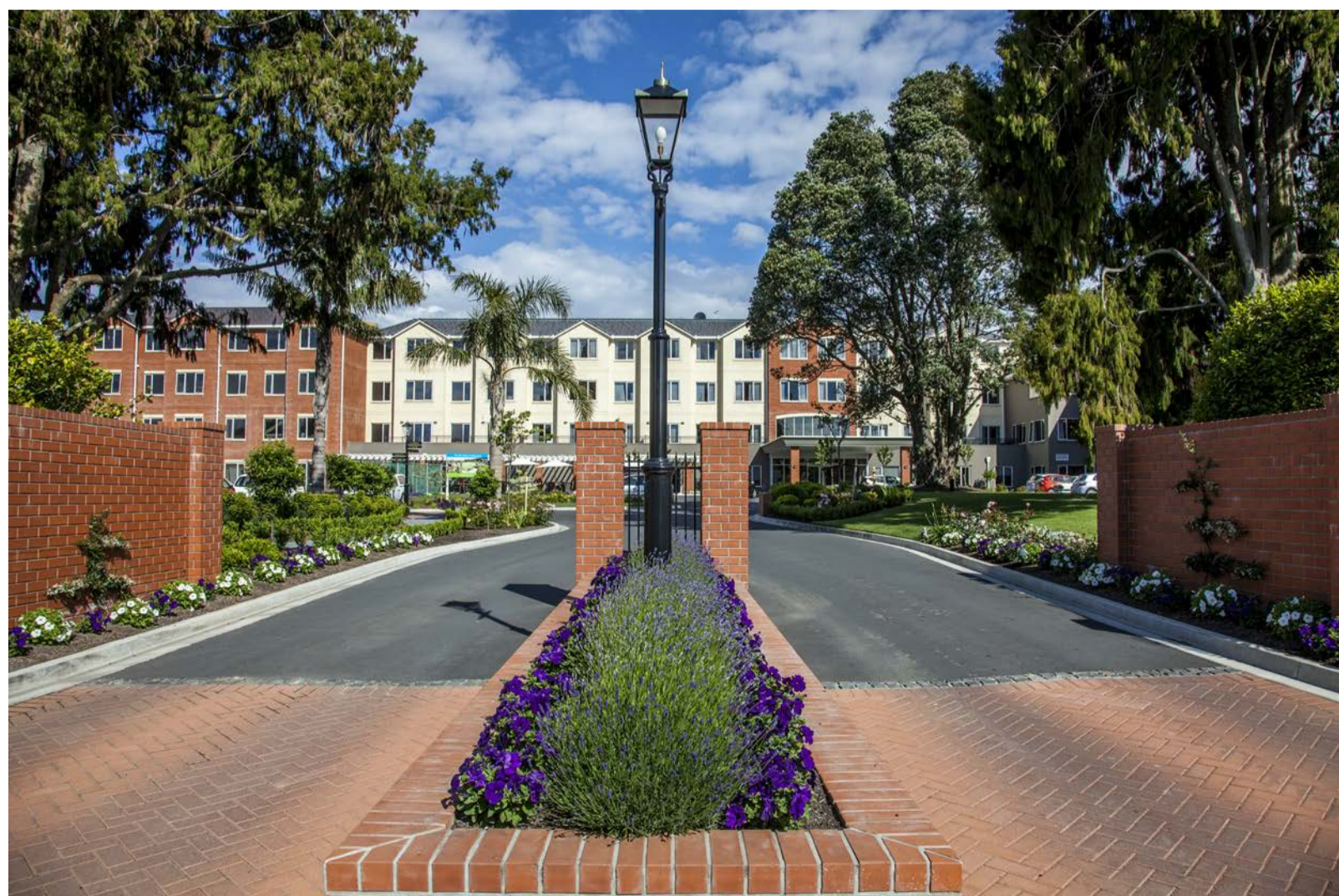
Princess Alexandra Retirement Village
Napier



Jean Sandle Retirement Village
New Plymouth



Rita Angus Retirement Village
Wellington



Bob Owens Retirement Village
Tauranga



Diana Isaac Retirement Village
Christchurch

A 09.11.15 Final Application Issue

AMENDMENTS



**Narrowneck
Retirement Village**

Typical Ryman Healthcare
Villages

S01 **.A2-020** A

Block Number	Issue Number	Issue Date	Project Number	Amendment
035 - RCT - S01 - A2-020 - A	SMC		035- RCT	
92 Russley Road P O BOX 771	CHRISTCHURCH PH 64 - 3 - 366 4069	NEW ZEALAND FAX 64 - 3 - 366 4861		

RC46

200mm
100mm
0mm
ORIGINAL SCALE

10/11/2015 11:49:22 a.m.
P:\baseserver\Projects\035- RCT - MS - 035- RCT - S01 - MS - Typical Villages.rvt



Edmund Hillary Retirement Village
Auckland



Jane Mander Retirement Village
Whangarei



Diana Isaac Retirement Village
Christchurch



Jane Mander Retirement Village
Whangarei



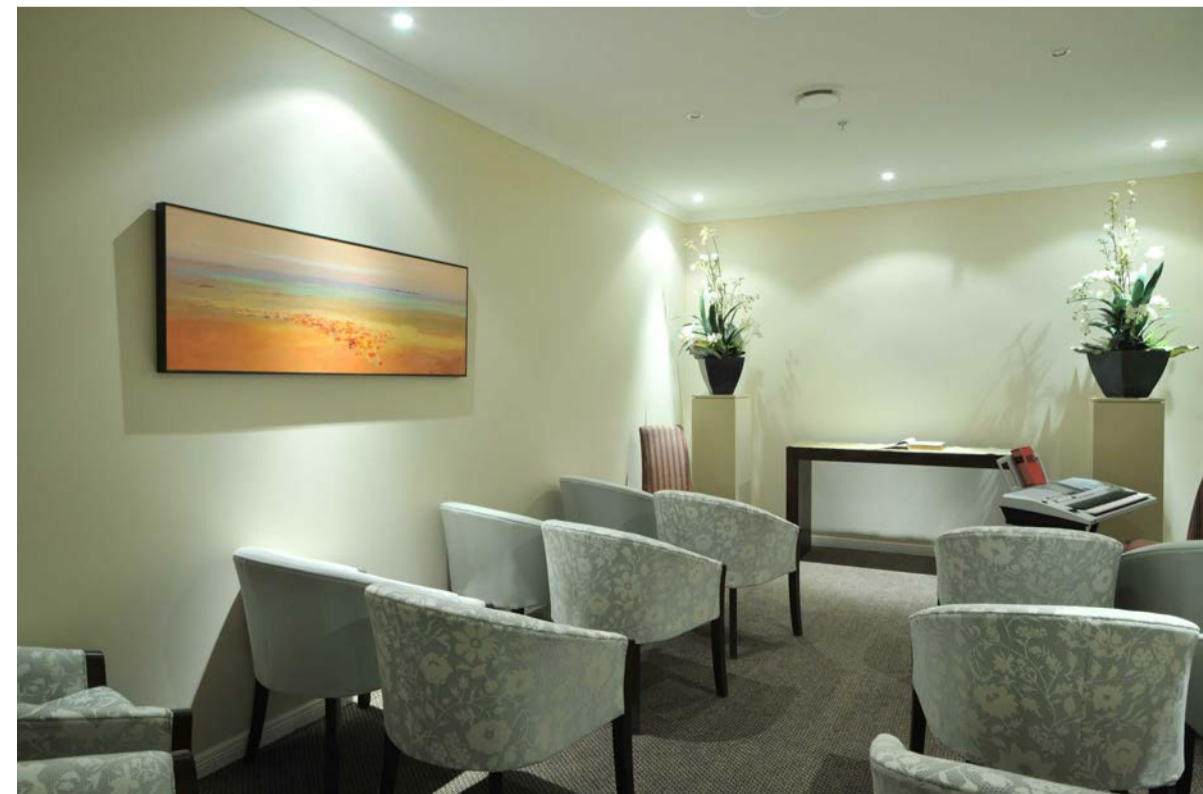
Julia Wallace Retirement Village
Palmerston North



Jane Mander Retirement Village
Whangarei



Jane Mander Retirement Village
Whangarei



Jane Mander Retirement Village
Whangarei



Jane Mander Retirement Village
Whangarei

A 09.11.15 Final Application Issue

AMENDMENTS



Narrowneck Retirement Village

Typical Ryman Healthcare Villages

S01	.A2-021	A
Block Number	Issue Number	Project Number
035 - RCT_S01_A2-021_A	SMC	035-RCT
92 Russley Road P O BOX 771	CHRISTCHURCH PH 64 - 3 - 366 4065	NEW ZEALAND FAX 64 - 3 - 366 4861

RC47

200mm

100mm

ORIGINAL SCALE

0mm

10/11/2015 11:48:42 a.m.
P:\baseren\Projects\035-RCT\MS_035-RCT_S01_MS_Typical Villages.rvt